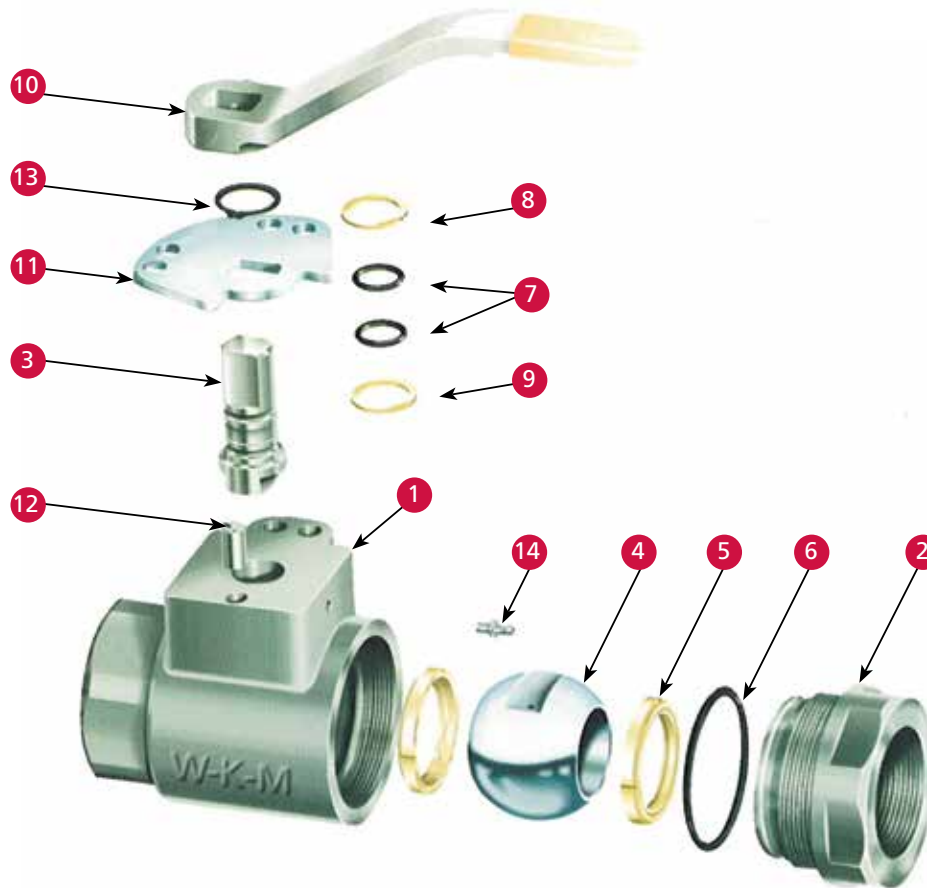


WKM[®] C50 Ball Valve

Two-piece threaded-end ball valves, fire-tested and certified to API 607 4th edition



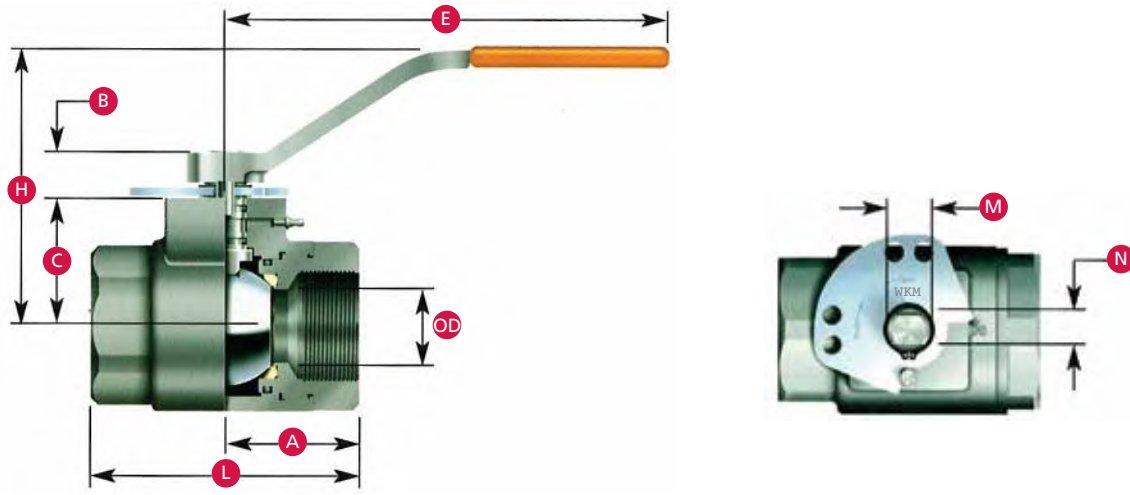
Features and Benefits

- Two-piece threaded-end ball valve, 5000 WOG
- Fire-tested and certified to API 607 4th edition
- Working pressure: 5000 PSI
- Conforms to NACE MR0175 (2002) specifications
- Positively retained stem design
- Encapsulated seat design
- Standard stem lubrication with fitting
- Tamper-proof double-locking plate

Materials List

Item	Quantity	Part	Material
1	1	Body	A487
2	1	Adapter	A487
3	1	Stem	CS Zinc/316 SS
4	1	Ball	A105 w/NiCr/316 SS
5	2	Seat	Delrin
6	1	Body Seal	Buna
7	2	Stem Seal	Buna
8	1	Stem Bearing	Delrin
9	1	Thrust Bearing	Delrin
10	1	Handle Assembly	Carbon Steel
11	1	Stop Plate	Plated Steel
12	1	Stop Pin	Steel
13	1	Retainer	Spring Steel
14	1	Lube Fitting	Steel

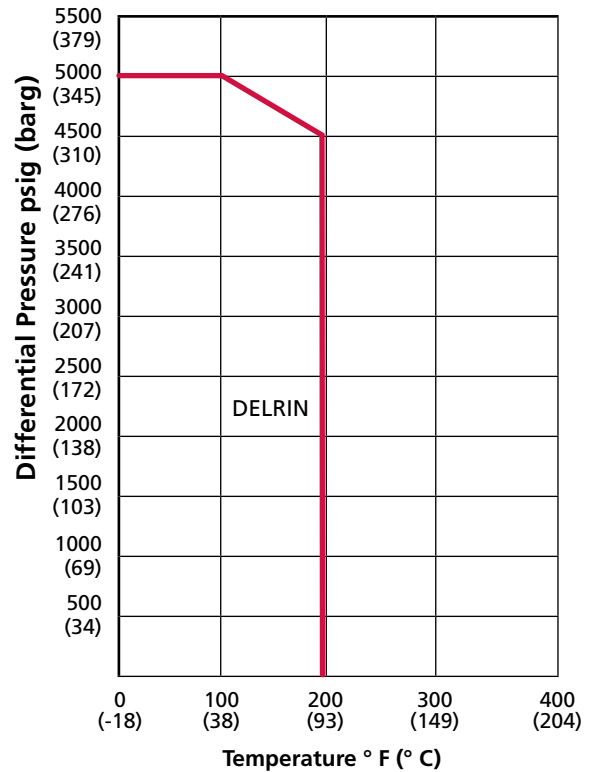
Dimensional Data



C50 Application

Size in. (mm)	1 (25.4) FP 1 x 1 (25.4 x 25.4) FP	1-1/2 (38.1) FP 1-1/2 x 1-1/2 (38.1 x 38.1) FP	2 (50.8) RP 2 x 1-1/2 (50.8 x 38.1) RP
OD	1 (25.4)	1-1/2 (38.1)	
L	4 (101.6)	5-1/2 (139.7)	
A	2 (50.8)	2-3/4 (69.9)	
C	1-5/8 (41.4)	2-5/8 (66.8)	
H	3-1/4 (82.6)	5-1/2 (139.7)	
E	6-1/4 (158.8)	8-1/2 (215.9)	
B	7/8 (22.4)	1 (25.4)	
N	.432/.428 (11/10.9)	.620/.616 (15.7/15.6)	
M	.621/.617 (15.8/15.7)	.871/.867 (22.1/22.3)	

Seat Rating



3250 Briarpark Drive, Suite 300
Houston, TX 77042
USA
Tel 1 281 499 8511