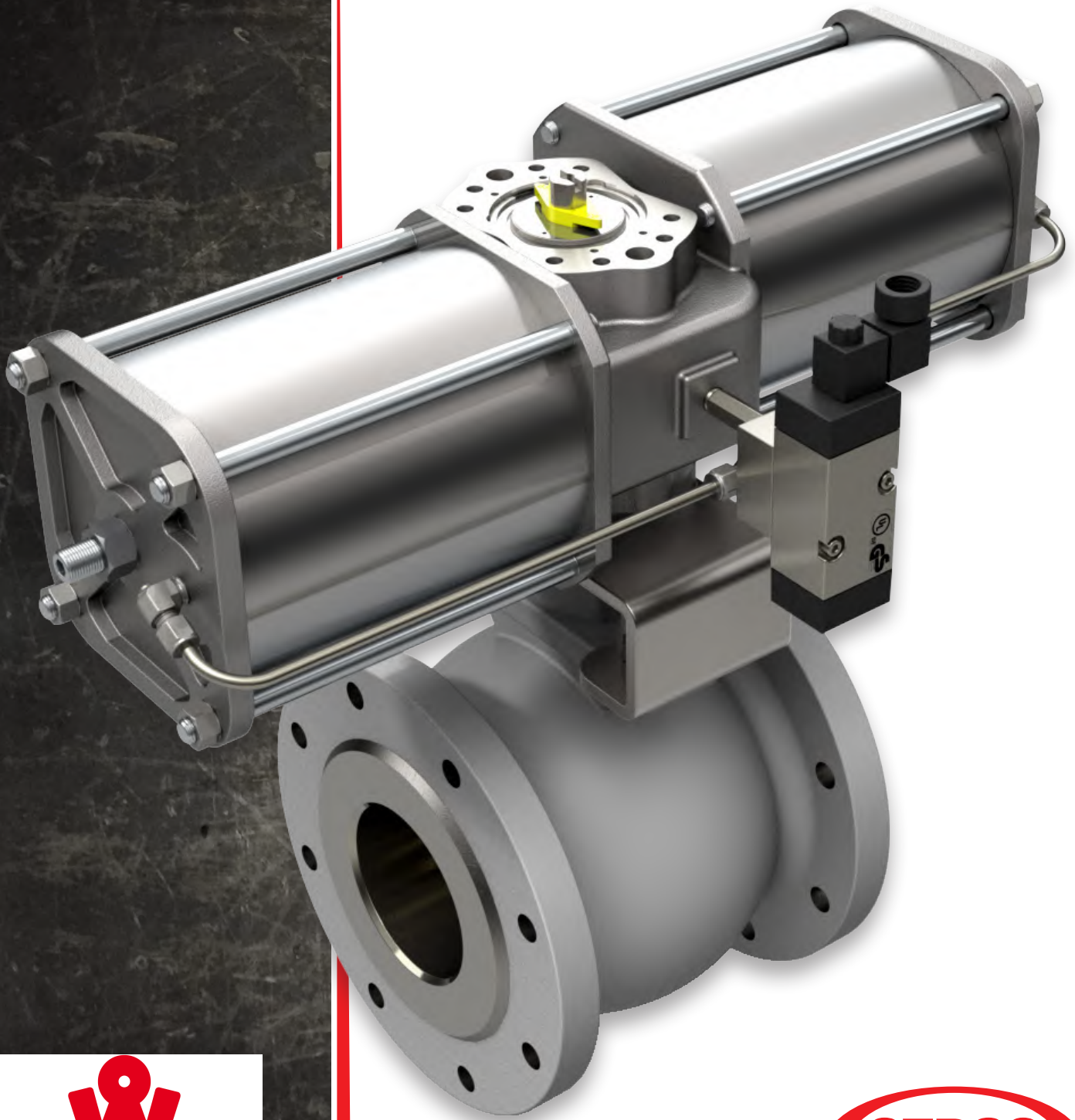


Solpaq Solenoid Mounting Pad

Our engineers have developed the SOLPAQ to directly attach NAMUR type solenoid valves to QTRCO actuators.



The Leader in Actuator Technology

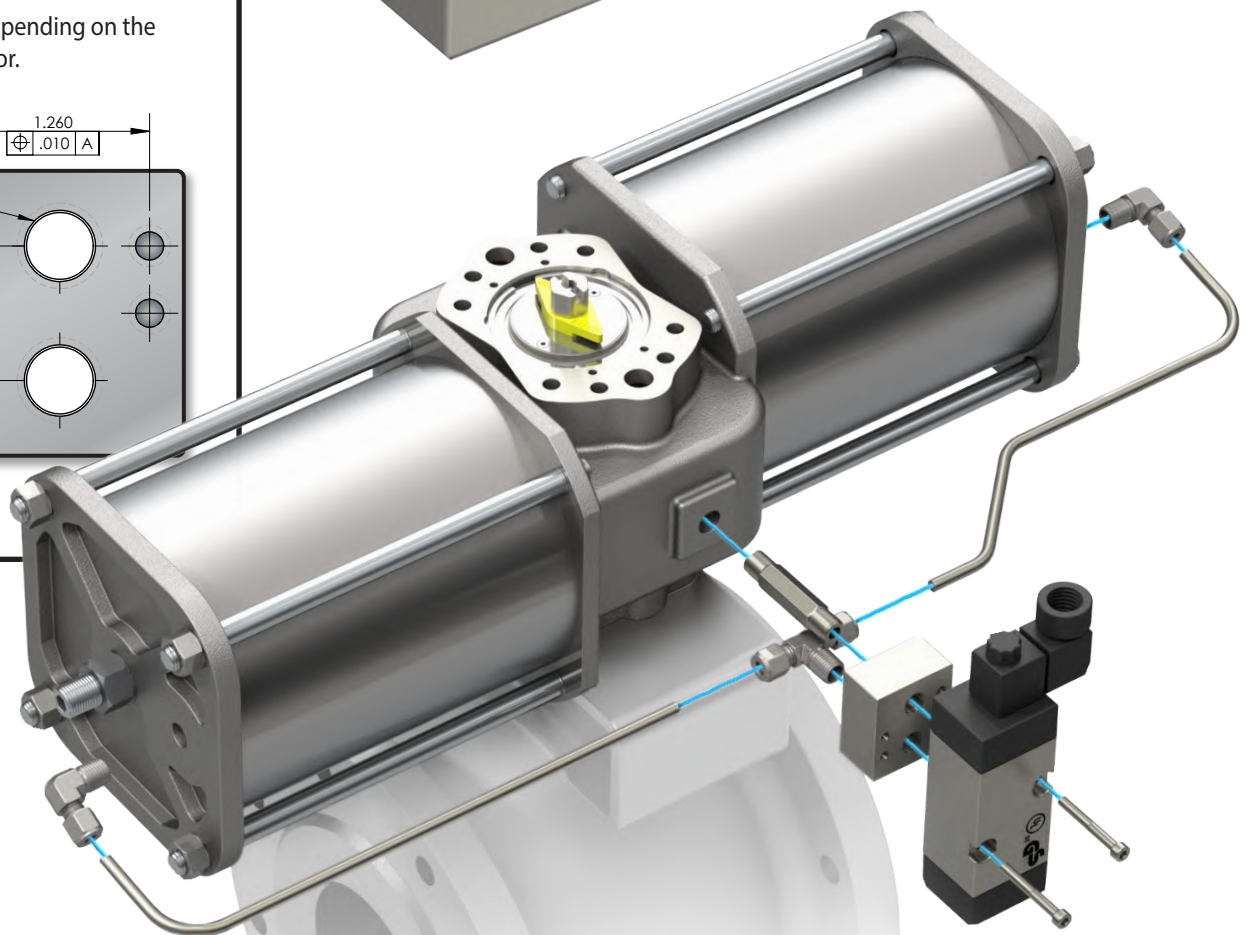
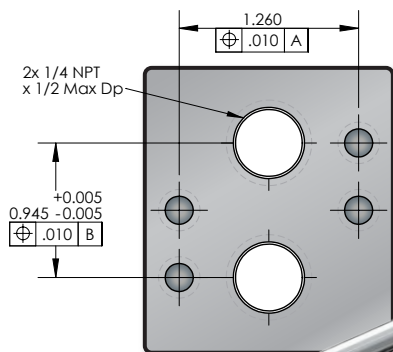


SOLPAQ

The SOLPAQ is a simple manifold block which can be attached to the actuator's body port. Attachment of the NAMUR solenoid valve is accomplished through pre-tubing of the actuator's end cap pressure port(s).

SOLPAQ's may be constructed from aluminum or stainless steel. Piping for these fixtures may be accomplished via stainless steel tubing or flexible hydraulic hose.

Port size will vary depending on the model of the actuator.



13120 Theis Lane
Tomball, TX 77375
(281) 516-0277

888.ACTU.8.IT
888.228.8848

www.qtrco.com
Email: actu8it@qtrco.com